

1

2

3

4

5

6

7

8

A

B

C

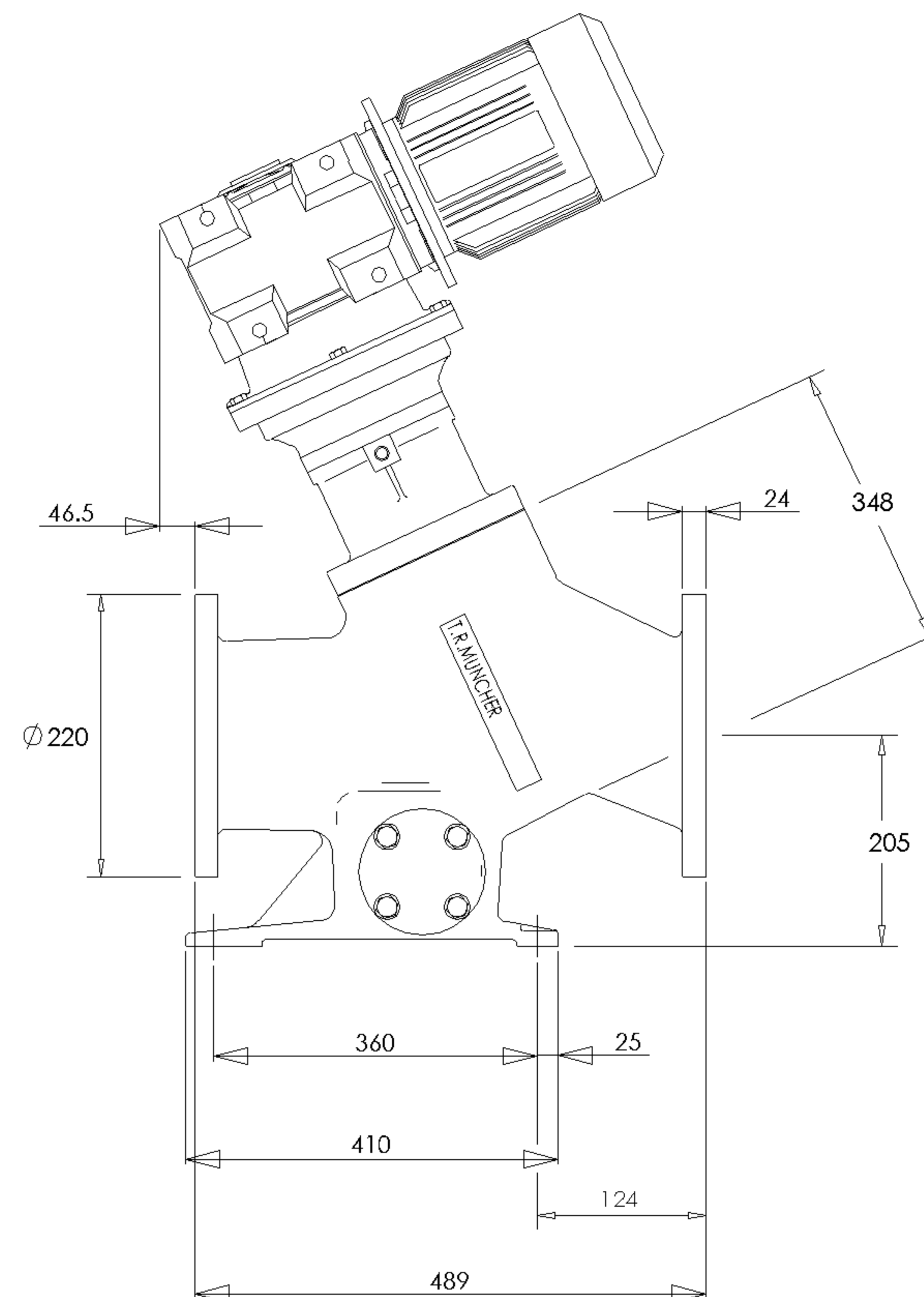
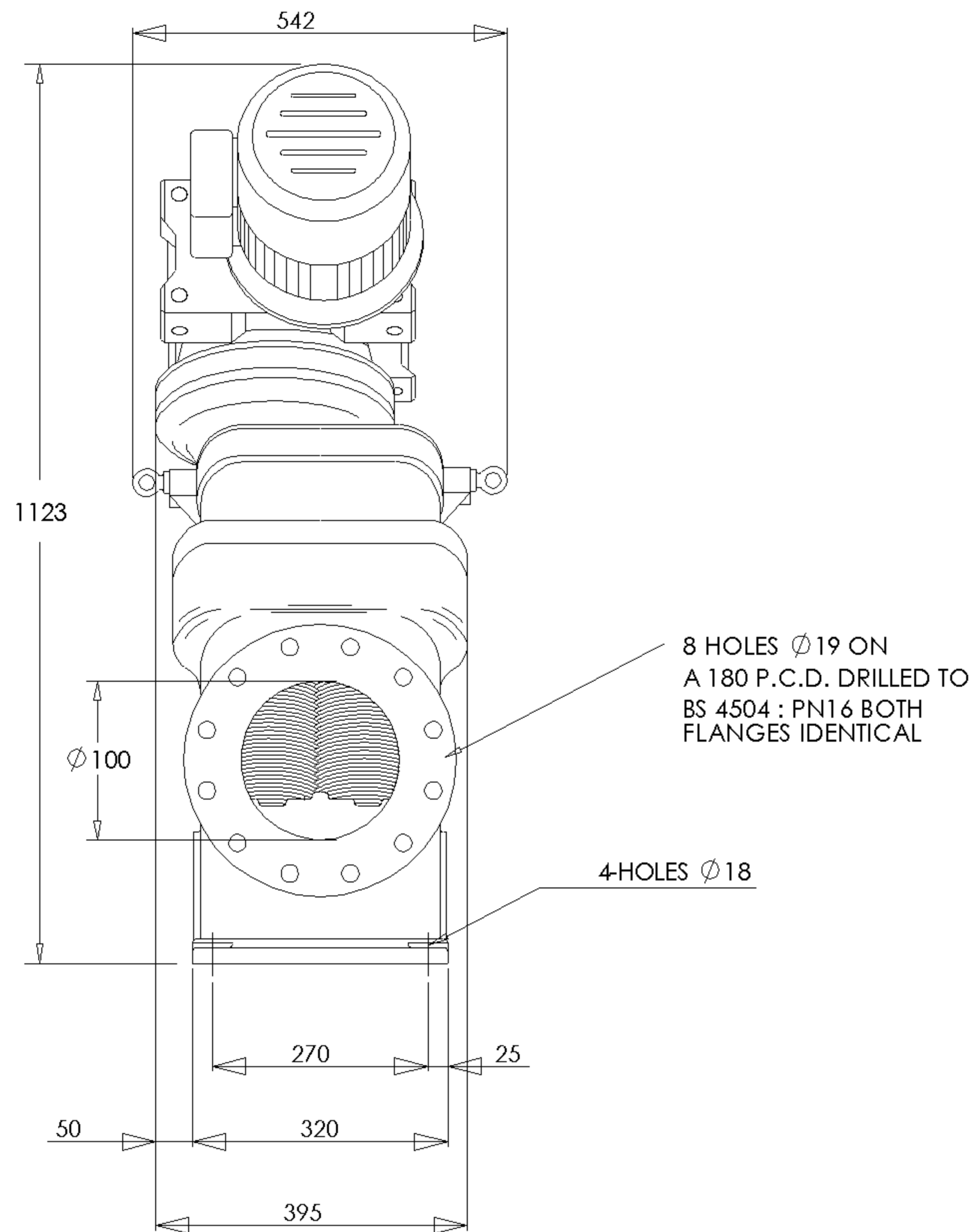
D

E

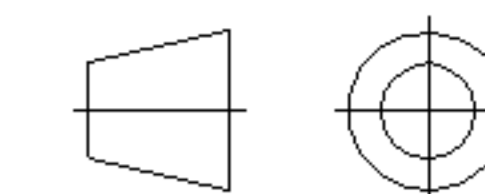
F

G

H



DO NOT SCALE



FIRST ANGLE PROJECTION

IF IN DOUBT ASK

RENUMBERED FROM

MODIFICATIONS

- GDE.1. USE UP EXISTING STOCKS.
- GDE.2. ALTER EXISTING STOCKS
- GDE.3. EXISTING STOCKS TO BE PASSED TO SERVICE
- GDE.4. EXISTING STOCKS TO BE SCRAPPED

MODEL(S)		
CT203CBT1B2 SK12080 100L		
SCALE	SHEET No.	ORIGINAL SPEC No.
1:1	1 OF 1	

WARNING-THIS DOCUMENT CONTAINS MONO PUMPS LIMITED'S CONFIDENTIAL AND TRADE SECRET INFORMATION, AND IS GIVEN TO THE RECEIVER IN CONFIDENCE. THE RECEIVER ACCEPTS THE DOCUMENT IN CONFIDENCE AND AGREES THAT, EXCEPT WITH MONO PUMPS LIMITED'S PRIOR EXPRESSED WRITTEN PERMISSION, IT WILL (1) NOT USE OR DISCLOSE TO OTHERS THE DOCUMENT OR ANY COPY THEREOF OR THE CONFIDENTIAL TRADE SECRET INFORMATION CONTAINED THEREIN; (2) NOT COPY OR REPRODUCE THE DOCUMENT WHOLE, OR PART; AND (3) UPON COMPLETION OF THE NEED TO RETAIN THE DOCUMENT, OR UPON DEMAND, RETURN THE DOCUMENT, ALL COPIES THEREOF AND ALL MATERIAL COPIED THEREFROM.

STAMP COMPONENT WITH PART NUMBER IN POSITION INDICATED BY SYMBOL ⊗  
REMOVE ALL BURRS & SHARP EDGES  
ALL DIMENSIONS IN MILLIMETRES AND WITHIN A TOLERANCE OF ±2mm  
SCREW THREADS TO ISO METRIC COARSE, MEDIUM FIT (H6 g6) TO BS3643  
ANGULAR DIMENSION TOLERANCE ±1°

TITLE	GENERAL ARRANGEMENT					
	T.R. MUNCHER / NORD DRIVE					
SURFACE FINISH ROUGHNESS	N5	N6	N7	N8	N9	
	Ra µm	0.4	0.8	1.6	3.2	6.3
	Ra µin	16	32	63	125	250

DRAWN	T.R.C.
DATE	09/03/00
CHECKED	P.W.
DATE	09/03/00
WEIGHT	340Kg

DRAWING No.	ISSUE
99B8623	1
 a Halliburton company	

Approved

A2